



# catalogue. dental – 2021

**SILICONE EXPERTS**

# index.

## catalogue dental 2021.

---

### Intro

Page

**04**

### Duplicating silicones

Page

**08**

### Cartridge silicones

Page

**20**

### About us

Page

**06**

### Putty silicones

Page

**14**

### Accessories for silicones

Page

**22**

01.	Intro	4 - 5	10.	Investing & Casting	34 - 39
02.	About us	6 - 7	11.	Accessories f. ceramics	40 - 41
03.	Duplicating silicones	8 - 13	12.	Equipment	42 - 43
04.	Putty silicones	14 - 19	13.	3D-Printing	44 - 47
05.	Cartridge silicones	20 - 21	14.	Wage work printing	48 - 49
06.	Accessories f. silicones	22 - 25			
07.	Model preparing	26 - 27			
08.	Sandblasting	28 - 29			
09.	Abrasives	30 - 33			

---

### Model preparing

Page

**26**

### Abrasives

Page

**30**

### Accessories for ceramics

Page

**40**

### 3D-Printing

Page

**44**

### Sandblasting

Page

**28**

### Investing & Casting

Page

**34**

### Equipment

Page

**42**

## SILCONIC® - Silicone Experts



**dental.2021**

smart  
products.

smart people.

## intro.



### High quality dental technology materials

Since 15 years we are offering high quality dental materials.

SILCONIC formerly dent-e-con is well-known for duplicating and putty silicones which we manufacture since many years and deliver in many markets outside dental. In the meantime we are one of the leading RTV-2 manufactures in Europe.

Dental technology has been changing since many years and the digitization has already found it's way. We have been representing the 3D-printing company Stratasys with their dental portfolio since 2013 and are therefore among the pioneers in this area.

I hope you enjoy browsing and look forward to your orders!

A handwritten signature in black ink, appearing to read "Marvin J. Schick".

## about us.



### Young - but already here for a long time

#### who we are

SILCONIC® company was founded in 2018. Our subsidiary company dent-e-con already exists since 2004, where we develop silicones for the dental industry.

Some years later the food industry market came up additionally, and very fast a lot of new silicones for branches as forming, hobby & art up to materials for the automobile branch. Today we have more than 500 recipes from our own development.



#### Compounder

We produce silicones on customer request and also on customers recipe and are thereby able to realize compounding from small to very large. You want to have your own RTV-2 silicone? Then you are right with us!



#### High Technology Factory

Our machinery is containing the latest LSR-injection moulding machines, Polyjet 3D-printer, as well as machines for compounding liquid and putty RTV-2 silicones.



#### High Standard Laboratory

In our own testing laboratory, we are able to produce silicones fast, individual and with high quality standards. We can guarantee a comprehensive check of every produced batch. Come on and join us, also with extraordinary requirements!



#### Best in the Market

Constant quality, reproduceable products, permanent control. Middlingness is not enough for us!

**directly from the manufacturer.**

## **Benefit from our know-how.**

We are manufacturer and direct sales in one. You benefit from our know-how in the field of silicone production and have short supply chains!

---



### **Best Service**

Benefit from our knowledge and our test laboratories. You speak directly to the manufacturer!



### **good term purchase**

avoid large trading margins!



### **short supply-chains**

High quality materials directly from the production into your lab!

# Duplicating silicones

---

## REPLISIL

### REPLISIL

Duplicating silicones \\\

**different shore-hardness**

**Flask or flaskless duplicating**

**pure silicone or with filling material**

With our duplicating silicones, we have the right one for every dental application variety. We cover almost every need and offer the largest portfolio in the dental branch.



Sale



25 min. curing time

### REPLISIL 9 N

Duplicating silicone //

Soft duplicating silicone in shore hardness A 9, extreme fluidity ensures a particular detail precision. Used for duplicating in a flask and for thin stumps.

Sizes: 2\*1 Kg | 2\*6 Kg | 2\*25 Kg

Colour:



25 min. curing time

### REPLISIL 17 N

Duplicating silicone //

Medium hard duplicating silicone in shore hardness A 17, extreme fluidity ensures a particular detail precision. Used for duplicating in a flask.

Sizes: 2\*1 Kg | 2\*6 Kg | 2\*25 Kg

Colour:



25 min. curing time

### REPLISIL 22 N

Duplicating silicone //

Hard duplicating silicone in shore hardness A 22, extreme fluidity ensures a particular detail precision. Used for free duplicating for example with a sleeve.

Sizes: 2\*1 Kg | 2\*6 Kg | 2\*25 Kg

Colour:



# volume.

What weighs more:

1 kg of springs or 1 kg of steel?



When comparing silicones, always pay attention to the specification of volume. Because not every brand keeps what it promises. Pure silicones have a low density and therefore a high volume!



## REPLISIL 22 S

Duplicating silicone //

Hard duplicating silicone in shore hardness A 22, extreme fluidity ensures a particular detail precision. Used for free duplicating for example with a sleeve.

Sizes: 2\*1 Kg | 2\*6 Kg | 2\*25 Kg

Colour: ■



## REPLISIL 22 SF

Duplicating silicone //

Hard duplicating silicone in shore hardness A 22, extreme fluidity ensures a particular detail precision. Used for free duplicating for example with a sleeve.

Sizes: 2\*1 Kg | 2\*6 Kg | 2\*25 Kg

Colour: ■



### REPLISIL 22 NF

Duplicating silicone //  
Hard duplicating silicone in shore hardness A 22, extreme fluidity ensures a particular detail precision. Used for free duplicating for example with a sleeve.

Sizes: 2\*1 Kg | 2\*6 Kg | 2\*25 Kg

Colour: ■



### REPLISIL 25 NF

Duplicating silicone //  
Hard duplicating silicone in shore hardness A 25, ensures a particular detail precision. Used for free duplicating for example with a sleeve.

Sizes: 2\*1 Kg | 2\*6 Kg | 2\*25 Kg

Colour: ■



### REPLISIL 32 N

Duplicating silicone //  
X-hard duplicating silicone in shore hardness A 32, ensures a particular detail precision. Used for free duplicating for example with a sleeve.

Sizes: 2\*1 Kg | 2\*6 Kg | 2\*25 Kg

Colour: ■



# Daniela Fischer

Who is the voice on the other end of the phone?

Daniela looks after our customers in the back office and also does the accounting.

# production.



## Paul Mumber

Paul is in charge of production. He coordinates the production orders, manages the facilities and mixes our incredibly good silicone. He also takes care of the quality management.



**25 min. curing time**

### REPLISIL A 14 N

Duplicating silicone //

Medium hard duplicating silicone in shore hardness A 14, very thin flowing. Slightly oily, hydrophilic surface. Easy removal of prostheses. At highest tear resistance very flexible

Sizes: 2\*1 Kg | 2\*6 Kg | 2\*25 Kg

Colour:



**60 min. curing time**

### TEKOSIL clear

Duplicating silicone //

Medium hard, clear duplicating silicone in Shore hardness A 22, thin flowing. Used for polymerization of light-curing composites..

Sizes: 2\*1 Kg | 2\*6 Kg | 2\*25 Kg

Colour:



**30 min. curing time**

### REPLISIL 16 FB

Duplicating silicone //

Medium hard duplicating silicone in shore hardness A 16, very thin flowing. Extraordinary mechanical properties!

Sizes: 2\*1 Kg | 2\*6 Kg | 2\*25 Kg

Colour:

# Putty silicone



## STENSIL ECO 85

Putty silicone //

Medium hard and flexible putty silicone in shore hardness A 85. Used for preparation of control bites, models for denture repairs, isolation of teeth , etc.

Sizes: 2\*1,5 Kg | 2\*5,0 Kg | 2\*25,0 Kg

Colour: ■



## STENSIL ECO 90

Putty silicone //

Hard but still flexible putty silicone in shore hardness A 90. Used for preparation of control bites, models for denture repairs, isolation of teeth , etc.

Sizes: 2\*1,5 Kg | 2\*5,0 Kg | 2\*25,0 Kg

Colour: ■





### STENSIL ECO 50

Putty silicone //

Soft and very flexible putty silicone in shore hardness A 50. Used for preparation of control bites, models for denture repairs, isolation of teeth , etc.

Sizes: 2\*1,5 Kg | 2\*5 Kg | 2\*25 Kg

Colour: ■



### STENSIL ECO 60

Putty silicone //

Soft and very flexible putty silicone in shore hardness A 60. Used for preparation of control bites, models for denture repairs, isolation of teeth , etc.

Sizes: 2\*1,5 Kg | 2\*5 Kg | 2\*25 Kg

Colour: ■



### STENSIL ECO 70

Putty silicone //

Medium and very flexible putty silicone in shore hardness A 70. Used for preparation of control bites, models for denture repairs, isolation of teeth , etc.

Sizes: 2\*1,5 Kg | 2\*5 Kg | 2\*25 Kg

Colour: ■

## Putty silicone



### a true softie.

Softes, homogenes ankneten und eine schnelle Abbindezeit bei gleichzeitig langer Verarbeitungszeit. Dieses Silikon bringt alles mit was Zahntechniker sich wünschen.

# topseller.





New!



### STENSIL ECO 85 soft

Putty silicone //

Medium hard and flexible putty silicone in shore hardness A 85. Used for preparation of control bites, models for denture repairs, isolation of teeth , etc.

Sizes: 2\*1,5 Kg | 2\*5,0 Kg | 2\*25,0 Kg

Colour:



# Lukas Holl

Lukas has been our man in sales since 2018 and your contact for all dental products.

Lukas is young, personable and dynamic. A real salesman!



### STENSIL ECO 20

Putty silicone //

Very soft and very flexible putty silicone in shore hardness A 20. Used for preparation of control bites, models for denture repairs, isolation of teeth , etc.

Sizes: 2\*1,5 Kg | 2\*5 Kg | 2\*25 Kg

Colour: ■



### STENSIL ECO 90 soft

Putty silicone //

Hard putty silicone in shore hardness A 90. Used for preparation of control bites, models for denture repairs, isolation of teeth , etc.

Sizes: 2\*1,5 Kg | 2\*5 Kg | 2\*25 Kg

Colour: ■



### STENSIL ECO 95

Putty silicone //

Very hard putty silicone in shore hardness A 95. Used for preparation of control bites, models for denture repairs, isolation of teeth , etc.

Sizes: 2\*1,5 Kg | 2\*5 Kg | 2\*25 Kg

Colour: ■

# Cartridge Silicones

## MATRISIL 80

Cartridge Silicones //

Medium hard, transparent matrix-cartridge silicone in shore hardness A 80. This addition curing 1:1-cartridge silicone is used for light-curing composites and also as transparent putty. Easy to cut and mill. The scope of supply includes 12 T-Mixer mixing tips.

Sizes: 2x50 ml

Colour: 





### GINGISIL SOFT

Cartridge Silicones //

Very soft and very flexible cartridge silicone in shore hardness A 45. This addition curing 1:1-cartridge silicone is used for manufacturing flexible gingival masks as well as dental master and saw models. It has an optimal dimension stability, is highly tear resistant and very flexible. GINGISIL soft is fast and easy to use.

Sizes: 2x50 ml

Colour: ■



### GINGISIL SCAN

Cartridge Silicones //

Soft and very flexible cartridge silicone in shore hardness A 70. This addition curing 1:1-cartridge silicone is used for manufacturing flexible gingival masks for implant works. It has an optimal dimension stability, is highly tear resistant and very flexible. After curing it is easy to mill and also scanable.

Sizes: 2x50 ml

Colour: ■

# Accessories for Silicones



## Duplicating flask

Accessories f. Silicones // Duplicating

Sizes: 1 pc.

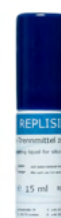


## Automix

Accessories f. Silicones // Cartridge

for cartridge silicones 50 ml 1:1

Sizes: 1 pc.



## REPLISIL TM

Accessories f. Silicones // Cartridge

Separating agent

Sizes: 15 ml



### DUBICAST S

Accessories f. Silicones //Duplicating  
 Made from Special-plastic, for silicone  
 duplicating Size S, blue



### DUBICAST M

Accessories f. Silicones //Duplicating  
 Made from Special-plastic, for silicone  
 duplicating Size M, green



### DUBICAST L

Accessories f. Silicones //Duplicating  
 Made from Special-plastic, for silicone  
 duplicating Size L, red



### Mixing tips

Accessories f. Silicones // Cartridge  
 for GINGISIL  
 blue, pointed - yellow, round  
 - green, T-Mixer  
 Sizes 50 pces.



### Mixing tips

Accessories f. Silicones //  
 for MIXER  
 Sizes: 50 pces.



### REPLICAST

Accessories f. Silicones //  
 Duplicating flasks for the production of  
 partial and full acrylic prosthetics, model  
 cast prosthetics, bite splints as well as cover  
 denture prosthetics in the acrylic casting  
 technique.





## REPLISIL 22 N

Duplicating Silicones //

Sizes: 2\*1 Kg | 2\*6 Kg | 2\*25 Kg

Colour: ■

- pure Silicone!
- thin flowing
- tear-resistant
- since 15 years the number one 1:1 Silicone

# topseller.





## MIXXER

Accessories f. Silicones // Duplicating

Automatic mixing- and dosing unit for addition curing silicones. Fully automatic 1:1 dosing by the touch of a button and a bubble-free and homogenous mixing. Mixing tips can be fixed and removed very easily. A clogging of the new mixing head with spatially divided outlets and integrated back pressure valve is impossible. MIXXER is very space-saving due to its individual adjustable tilting. 2 Adapter for 1 or 6 Kg are included.

Measures: 325 mm x 245 mm x 270 mm (H x W x D)  
 Voltage: 230 volt / 115 volt  
 Output Power: 260 watt  
 Weight: 10,8 Kg

## Accessories MIXXER

Accessories Silicones // Duplicating

Adapter for REPLISIL A+B

Size:  
1 Kg | 6 Kg | 25 Kg

# Model Preparing



## REPLIGEL

Model Preparing //

Reversible duplicating gel on base of agar-agar. Due to its excellent reproduction accuracy even to the smallest details REPLIGEL is very well suitable for demanding partial denture. It produces a tear proof, highly elastic duplicating mould which doesn't cause any problems either at undercuts. A high-quality base material produces an extremely long durability.

Sizes: 6 kg

Colour:

Sorts:

REPLIGEL P - for all gypsum free Investing Materials

REPLIGEL PD - x-hard for attachment work and Acrylic casting technique

REPLIGEL PG - special Duplicating Gel for Gypsum

REPLIGEL PA - special Duplicating Gel for Acrylic casting technique



### OKKLU CLASSIC

Model Preparing //

green with 1 x spray nozzle

Sizes:

75ml



### OKKLU EXACT

Model Preparing //

mint-green with 2 x spray nozzles  
(fine + normal)

Sizes:

75ml



### Rapid Glue

Model Preparing //

Sizes:

2g | 10g



### LIQUIDIP

Model Preparing //

An alcohol-based cold dipping liquid in low viscosity for hardening the surfaces of investment models when using gel-duplicating material (REPLIGEL). LIQUIDIP penetrates well into the surface of the duplicate model, it becomes hard and smooth and improves the adhesion of waxes when modelling.

Sizes:

1L

# Sandblasting



## ALUKOR

Sandblasting //

A highly purified white corundum with a share of 99,7% aluminium oxide. It contains no SiO<sub>2</sub>, hence causes no danger of silicosis. Extremely hard and sharp-edged grain with high stability provides for best abrasion and results an economical consumption. The grain does not wear out but splinters and by that keeps its sharpness during the complete use.

Sizes: 5Kg | 25 Kg

**50μ | 110μ | 125μ | 150μ | 250μ**



## SIOPERL

Sandblasting //

Blasting medium made from hardened and lead-free natron glass in form of beads that produce an even silky mat finish on metal surfaces. There is no metal loss because it doesn't cause an abrasive effect.

**50μ | 150μ**



## SIOKOR

Sandblasting //

Mixture from glass beads and aluminium oxide for abrasive blasting of non-precious alloys in model casting - 250μ.

**250μ**



# Arthur Glatzel

Arthur is packing your goods with the greatest care and ensures that they reach their destination undamaged.

# Abrasives



## FIBER-DISC

Abrasives //Cutting Discs

- great time saving - less tool changing
- no unpleasant smell due to glass fibre reinforcement
- long life span
- best breaking strength

Sizes: 50 pcs.

**ST 22 x 0,2 mm** | **S 22 x 0,3 mm** | **SB 25 x 0,5 mm** | **LS 40 x 0,5 mm** | **LB 40 x 0,7 mm** | **L 40 x 1,0 mm**  
Precious metal      Metal      CoCr      CoCr      CoCr      CoCr



## FIBER-DISC

Abrasives //Cutting Discs

no abrasive traces on ceramics

Sizes: 50 pcs.

**CT 22 x 0,2 mm | C 22 x 0,3 mm**

**Ceramics**

**Ceramics**

## FIBER-DISC

Abrasives //Cutting Discs

diamond reinforced

Sizes: 10 pcs.

**DT 20 x 0,2 mm | D 20 x 0,3 mm**

**Zirconia**

**Zirconia**



## CERAMI-DISC

Abrasives //Cutting Discs

Sizes: 100 pcs.

**S 22 x 0,2 mm**

**Keramik**

## SLIM-DISC

Abrasives //Cutting Discs

Sizes: 100 pcs. | 200 pcs.

**22 x 0,3 mm**

**Precious metal**

## CUT-DISC

Abrasives //Cutting Discs

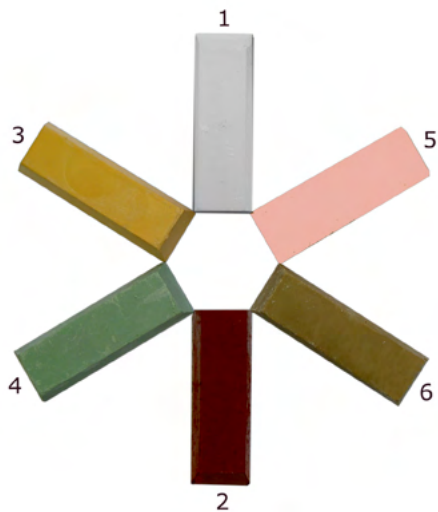
Sizes: 100 pcs.

**S 22 x 0,6 mm | M 25 x 0,6 mm**

**CoCr**

**CoCr**

# Abrasives



## Polishing Pastes

Abrasives //

Mixture of grinding mediums and waxes, manufactured in a grease consistency which sticks very well on the polishing brush. The regular distribution of the abrasives causes a very constant polishing result. An excessive abrasion of the polishing brush and an overheating of the object can be avoided by a sufficient quantity lay on the brush.

Sizes: 350 g

**1 light grey pre-polishing precious metal | 2 red final polishing precious metal | 3 yellow pre-polishing CoCr | 4 green final polishing CoCr | 5 pink pre-polishing acrylics | 6 beige final polishing acrylics**





## Corundum Paper

Abrasives //

Wear-resistant, flexible paper pad or cloth pad with regular grain coating guarantees an excellent smoothing to curves and contours and by that a regular grinding or polishing performance. Full synthetic resin bonding agent for an outstanding grain adhesion.

Sizes: 25 m

**Grain size** 80 | 100 | 120 | 150 | 180 | 220  
240 | 320 | 400 | 600 | 800 | 1000

## Emery Cloth

Abrasives //

Wear-resistant, flexible paper pad or cloth pad with regular grain coating guarantees an excellent smoothing to curves and contours and by that a regular grinding or polishing performance. Full synthetic resin bonding agent for an outstanding grain adhesion.

**Grain size** 80 | 100 | 120 | 150 | 180 | 220  
240 | 280 | 320 | 400



Produces a brightness surface on all customary model casting alloys without stripes and is suitable for all electrolytic polishing units used in dental.

Sizes: 1 L

## LIQUIPOL

Abrasives //

# Investing & Casting

Speed!



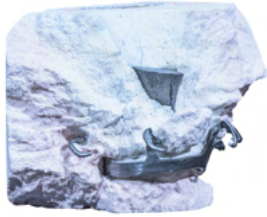
## ECOVEST PCS

Investing & Casting // Investing

universal speed investment material for all alloys, phosphate-bound, carbon-free for gel and silicon duplicating (REPLIGEL P, REPLISIL 22 N). A special composition of selected raw materials guarantees highest precision and keeps nevertheless a special degree of insensitivity. Finest grain structure and high density guarantees an extremely smooth surface and very stable margins. High thermal stability, easy removable

Sizes: 28 x 160 g incl. 1 L liquid

Speed!



## ECOVEST PMS

Investing & Casting // Investing

Speed investment material for all alloys, phosphate-bound, carbon-free (also for conventionally heating procedure). For gel and silicon duplicating (REPLIGEL P, REPLISIL 22 N). For particularly smooth and detailed surfaces high thermal stability, easy removable

Sizes: 40x150g | 20x450g



## ECOVEST 3D

Investing & Casting // Investing

for 3D - prints and all light curing burnable modelling acrylics.  
Very fine grain.

Sizes: 30x150g



# Domenic Stotz

Unloading, uploading, order picking.  
Domenic can handle any work device very well.

# Investing & Casting



## ECOVEST liquid

Investing & Casting // Investing

Universal-mixing-liquid for all phosphate-bound investments.

Sizes: 1 L

**LC 100% | LP (pressable ceramics) 100% | LCS 140% | L (3D) 100%**



## CERALINER

Investing & Casting //

CERALINER is an inlay strip made from purest ceramic fibre paper for casting rings in crown and bridge technique as replacement of the former used asbestos liner.

Sizes: Roll 50m



## BIOLINER

Investing & Casting //

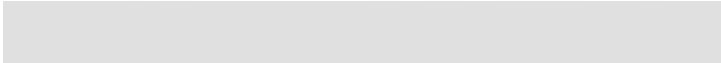
BIOLINER is the biologically harmless quality and in mode of action in accordance with CERALINER.

Sizes: Roll 50m

# fact.

BIOLINER is made from silicate fibers. Heat resistant up to 1000 ° C. Unlike ceramic fibers, the lungs can excrete the material again. It is therefore absolutely harmless to health.

# Investing & Casting



## ECOLLOY

Investing & Casting //Alloys

NEM- non-precious metal alloy and NEM- model casting alloys made in germany!

Sizes: 1 Kg

**ECOLLOY FMS NEM – non-precious metal alloy | ECOLLOY NF NEM- model casting alloy**



# Sascha

# Banzhaf

Our operations manager Sascha does the raw material purchase, coordinates the Production and ensures full stocks. He is also responsible for the production of our injection molded parts and handling the systems.

## Accessories for Ceramics



### **CERABLEND / CERAMIX**

Accessories for Ceramics//

Porcelain pallets with cover (painting) and without cover (mixing)

Gebinde: 1 St.

**CERABLEND painting pallet with cover | CERAMIX mixing pallet**





## CERATRAY / CERAPEG

Accessories for ceramics //

Firing tray made from porcelain. The honeycomb structure supports an individual positioning of the support pins and effects a very low thermal absorption.

Sizes: 1 pc. (without pegs)  
10 pces. (pegs)



## CERAPAD

Keramikbearbeitung //

Firing trays from ceramic fibre paper, Ø 65 mm, thickness 15 mm. The isolating effect of the ceramic fibre paper removes only minimal heat from the object and has no negative effects by the contact on porcelain. Made in optimal size also for large dimensioned bridge constructions.

Sizes: 1 pc. (without pegs)



# Cindy Heilemann

Cindy also looks after our customers. She is personable, empathetic and competently.

# Equipment

---



## ACRYCLAVE

Equipment//

Pressure pot made from aluminium for polymerisation of cold curing acrylics with resistant anti-corrosion coating. (TÜV/GS+CE).

Sizes: 1 pc.

**ACRYCLAVE M 6 ltr. incl. filling hose and valve**



## Blow off nozzle

Equipment//

for 6 mm tube

Sizes: 1 pc.



## IWANSON

Equipment//

for metal with pointed feeler ends  
for wax with round feeler ends

Sizes: 1 pc.



BEST QUALITY



MADE IN GERMANY

## 3D-Printing

---





## Objet30 Dental Prime™

3D-Druck //

### Die Präzision digitaler Zahnmedizin zu einem erschwinglichen Preis

Mit der Objet30 Dental Prime können Sie eine Vielzahl zahnmedizinischer Anwendungen durch 3D-Druck realisieren und die externe Vergabe der Modellherstellung vermeiden.

Die Objet30 Dental Prime bietet die Vorteile der digitalen Zahnmedizin zu einem erschwinglichen Preis, in einem kompakten Formatfaktor, der sich an die Anforderungen Ihres Labors anpasst. Mit einem Bauvolumen von 300 × 200 × 100 mm und zwei Druckmodi erweitert die Objet30 Dental Prime das Angebot Ihres Labors um 3D-gedruckte zahnmedizinische und kieferorthopädische Modelle, Schienen, Bohrschablonen, Provisorien, Mock-Ups, Smile to go, Modellguß und individuellen Abdrucklöffeln.

### Wählen Sie zwischen zwei Druckmodi für maximale Einsatzflexibilität:

- High Quality: Erfassen Sie präzise Details dank der 3D-Druckauflösung von 16 µm.
- High Speed: Fertigen Sie Schienen, Bohrschablonen und individuelle Abdrucklöffeln in

### Technische Daten:

Bauplatzform: 300 x 200 x 100 mm Schichtstärke (Z-Achse): Horizontale Schichten von nur 16 µm

Auflösung: X-Achse 600 dpi Y-Achse 600 dpi Z-Achse 1600 dpi

Druckmodi: High Quality: Auflösung 16 µm High Speed: Auflösung 28 µm



## J5 DentaJet™

3D-printing //

### **Reduce your space requirements and increase productivity**

Small enough to fit in small and medium-sized labs, but with a larger platform to make more parts in a compact, lab-friendly environment.

### **Simplify production and reduce manual work**

Unattended operation, fewer retooling, less loading time and minimal post-processing reduce manual work while maximizing performance.

### **Reduce the number of printers you need and lower costs with mixed platforms**

The J5 DentaJet™ is like three printers in one. Use different materials in one job. For example, print drilling templates together with models and a soft gingival mask. Or a castable model casting together with an implant model or an aligner model.

### **Unsurpassed quality and accuracy**

The DentaJet is equipped with a unique 360° print compartment for higher performance precise, full-color parts made of different materials - **in a single print** -





## MED610

3-printing//materials

Clear, biocompatible material with medical approval for temporary oral use.

Sizes: 1,1 Kg

### used for:

- surgical guides
- splints
- model casting



## MED620

3-printing//materials

Opaque, white material in A2 shade with the industry's best color match and medical approval for temporary oral applications (up to 24 hours).

Sizes: 2x1 Kg / 3,6 Kg

### used for:

- models
- individual trays
- mock Up
- try ins



## MED625FLX

3-Druck//Materialien

flexibles Material für Gingiva Masken oder indirect bonding trays.

Gebinde: 2x1 Kg / 3,6 Kg

### geeignet für:

- gingival masks
- bonding trays

## Colours

3-printing//materials



VeroCyanV™ (RGD845)  
 VeroMagentaV™ (RGD852)  
 VeroYellowV™ (RGD838)  
 VeroDent™ PureWhite (DEN847)



# Stratasy J5 DentaJet 3D printer

# Wage work printing



## Model

3-printing//wage work

**upper or lower jaw**

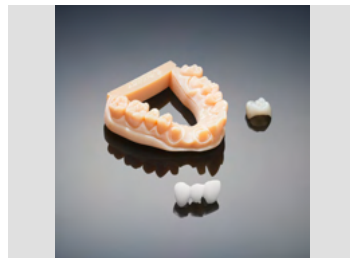
price:

**€ 14,50**

**upper + lower jaw**

price:

**€ 26,00**



## Full Arch

3-printing//wage work

**upper or lower jaw  
(with any number of stumps)**

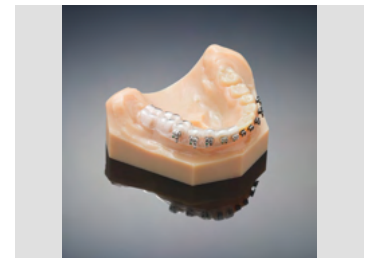
price:

**€ 16,50**

**upper + lower jaw  
(with any number of stumps)**

price:

**€ 29,00**



## Model with socket

3-printing//wage work

**upper or lower jaw**

price:

**€ 19,50**

**upper + lower jaw**

price:

**€ 36,00**





### Ind. tray

3-printing//wage work

**upper or lower jaw**

price:

**€ 20,00**



### Model

3-printing//wage work

**upper or lower jaw  
(with any number of stumps)**

price:

**€ 9,50**

**upper + lower jaw  
(with any number of stumps)**

price:

**€ 16,50**

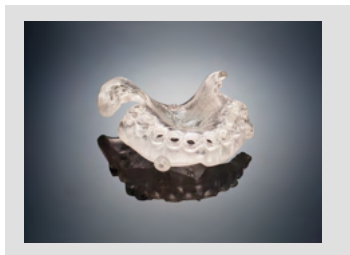


### Mock Up

3-printing//wage work

price:

**€ 41,50**



### Surgical guide

3-printing//wage work

price:

**€ 49,90**



### model casting

3-printing//wage work

price:

**€ 42,50**



### Gingival mask

3-printing//wage work

**transparent**

price:

**€ 10,50**

**contact us!**

**silicone experts.**



**„ Success comes when you  
do what you love“**

Florian Scholz  
CEO

**thanks.**

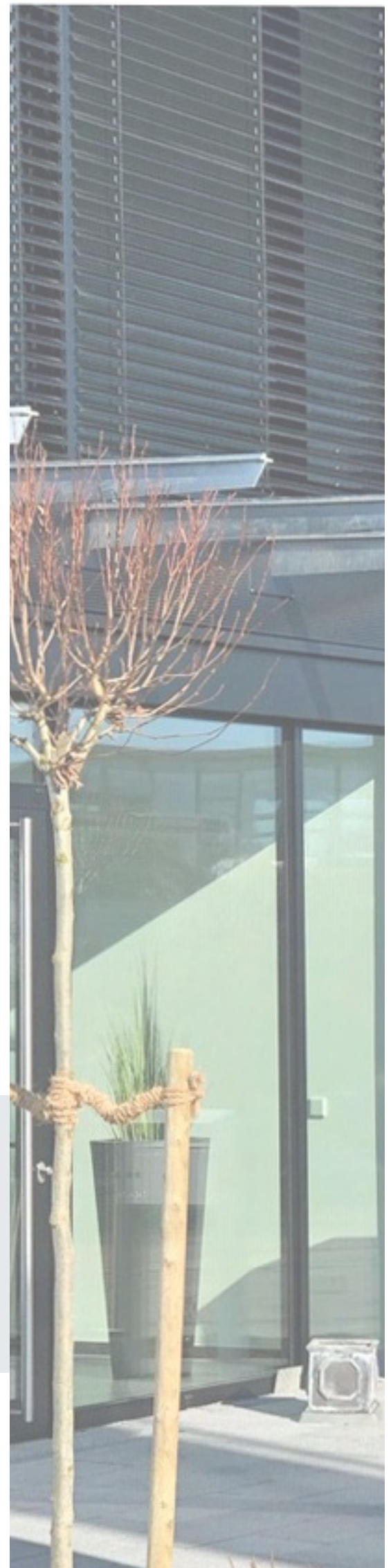
SILCONIC® GmbH & Co. KG

Erlenweg 3/1  
89173 Lonsee

T: +49 7336 49697-0  
F: +49 7336 49697-99

[info@silconic.de](mailto:info@silconic.de)

[www.silconic.de](http://www.silconic.de)





SILCOONIC<sup>®</sup>  
Silicone Experts

Erlenweg 3/1



SILCONIC<sup>®</sup> GmbH & Co. KG

Erlenweg 3/1  
89173 Lonsee